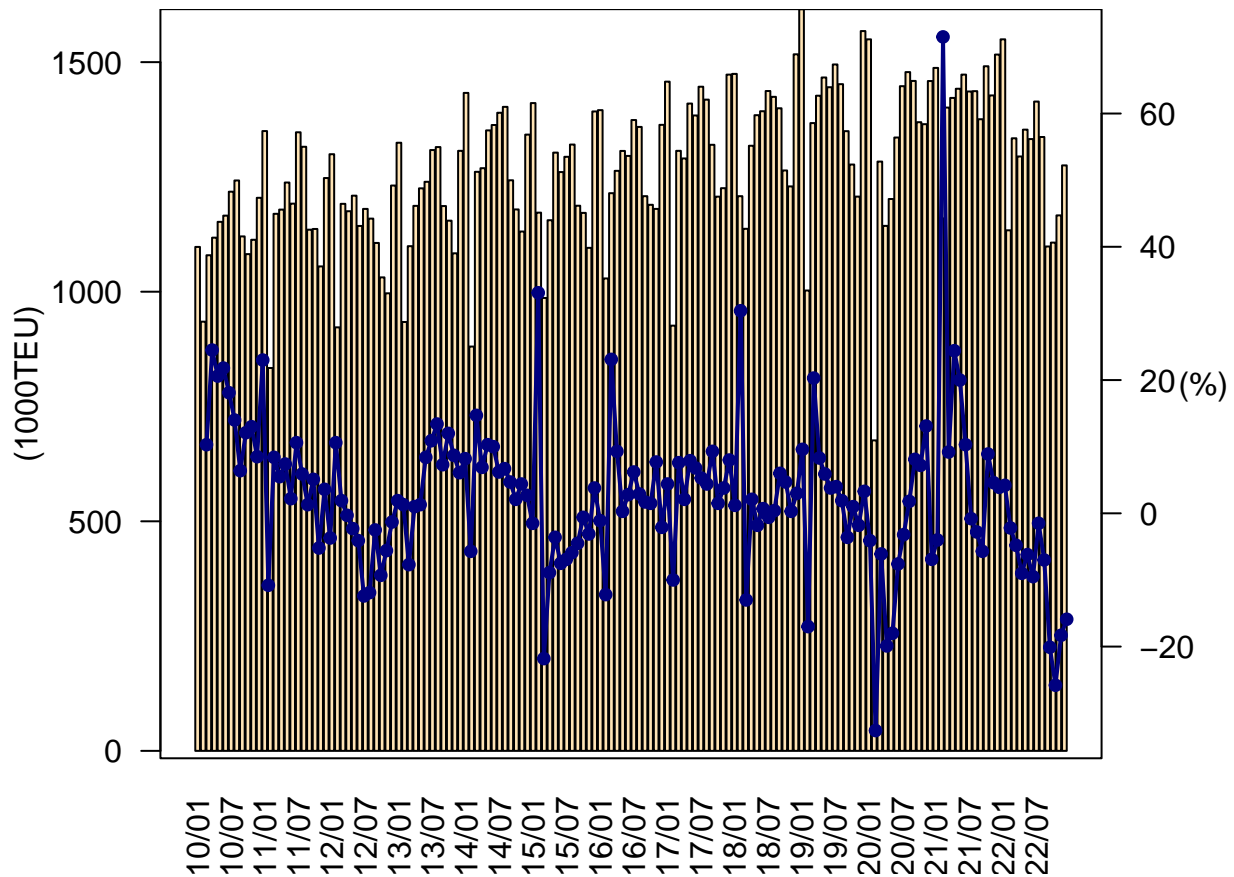
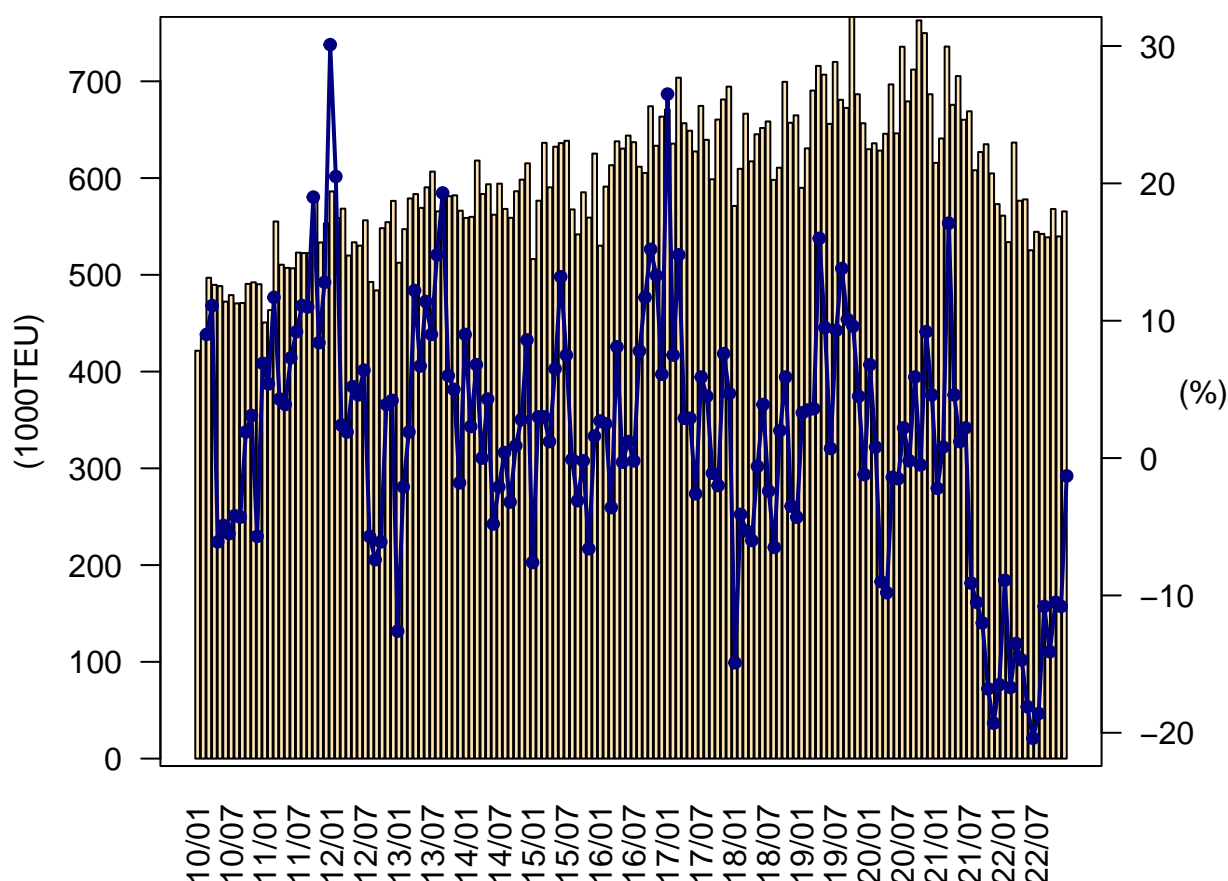


欧州航路往航・月別荷動き量の推移



	2018年		2019年		2020年		2021年		2022年	
	TEU	%	TEU	%	TEU	%	TEU	%	TEU	%
1月	1,474,424	1.2	1,615,378	9.6	1,549,674	-4.1	1,487,451	-4.0	1,549,689	4.2
2月	1,208,096	30.4	1,002,598	-17.0	676,197	-32.6	1,159,728	71.5	1,133,779	-2.2
3月	1,137,000	-13.0	1,367,266	20.3	1,283,436	-6.1	1,401,049	9.2	1,334,171	-4.8
4月	1,317,866	2.1	1,426,882	8.3	1,143,383	-19.9	1,422,095	24.4	1,294,556	-9.0
5月	1,384,467	-1.8	1,466,550	5.9	1,201,918	-18.0	1,442,062	20.0	1,352,986	-6.2
6月	1,393,096	0.7	1,445,359	3.8	1,335,861	-7.6	1,472,858	10.3	1,332,450	-9.5
7月	1,437,134	-0.6	1,494,909	4.0	1,447,664	-3.2	1,436,079	-0.8	1,414,168	-1.5
8月	1,424,462	0.4	1,452,058	1.9	1,478,310	1.8	1,436,834	-2.8	1,336,963	-7.0
9月	1,399,543	6.0	1,349,698	-3.6	1,459,099	8.1	1,375,673	-5.7	1,098,483	-20.1
10月	1,264,095	4.7	1,276,968	1.0	1,369,207	7.2	1,491,050	8.9	1,106,998	-25.8
11月	1,229,358	0.3	1,207,131	-1.8	1,364,914	13.1	1,427,454	4.6	1,166,267	-18.3
12月	1,517,064	3.0	1,567,664	3.3	1,458,873	-6.9	1,516,468	3.9	1,275,123	-15.9
1月-12月	16,186,605	2.0	16,672,461	3.0	15,768,536	-5.4	17,068,801	8.2	15,395,633	-9.8
Q1	3,819,520	3.5	3,985,242	4.3	3,509,307	-11.9	4,048,228	15.4	4,017,639	-0.8
Q2	4,095,429	0.3	4,338,791	5.9	3,681,162	-15.2	4,337,015	17.8	3,979,992	-8.2
Q3	4,261,139	1.8	4,296,665	0.8	4,385,073	2.1	4,248,586	-3.1	3,849,614	-9.4
Q4	4,010,517	2.7	4,051,763	1.0	4,192,994	3.5	4,434,972	5.8	3,548,388	-20.0
年合計	16,186,605	2.0	16,672,461	3.0	15,768,536	-5.4	17,068,801	8.2	15,395,633	-9.8

欧州航路復航・月別荷動き量の推移



	2018年		2019年		2020年		2021年		2022年	
	TEU	%	TEU	%	TEU	%	TEU	%	TEU	%
1月	571,169	-14.9	589,908	3.3	629,848	6.8	615,698	-2.2	561,182	-8.9
2月	609,572	-4.1	630,716	3.5	635,948	0.8	640,919	0.8	533,780	-16.7
3月	666,534	-5.3	690,459	3.6	628,456	-9.0	735,944	17.1	636,703	-13.5
4月	617,286	-6.0	715,912	16.0	645,783	-9.8	675,731	4.6	576,596	-14.7
5月	645,279	-0.6	706,891	9.5	696,843	-1.4	705,415	1.2	577,973	-18.1
6月	651,768	3.9	656,014	0.7	646,227	-1.5	660,281	2.2	525,424	-20.4
7月	658,541	-2.4	720,014	9.3	735,735	2.2	669,036	-9.1	544,439	-18.6
8月	598,096	-6.5	680,881	13.8	679,275	-0.2	608,124	-10.5	542,311	-10.8
9月	610,731	2.0	672,494	10.1	712,147	5.9	626,892	-12.0	538,777	-14.1
10月	699,475	5.9	766,574	9.6	762,949	-0.5	634,987	-16.8	568,052	-10.5
11月	657,204	-3.5	686,638	4.5	749,827	9.2	604,829	-19.3	539,681	-10.8
12月	664,851	-4.3	656,670	-1.2	686,643	4.6	573,098	-16.5	565,582	-1.3
1月-12月	7,650,506	-3.1	8,173,171	6.8	8,209,681	0.4	7,750,954	-5.6	6,710,500	-13.4
Q1	1,847,275	-8.1	1,911,083	3.5	1,894,252	-0.9	1,992,561	5.2	1,731,665	-13.1
Q2	1,914,333	-1.0	2,078,817	8.6	1,988,853	-4.3	2,041,427	2.6	1,679,993	-17.7
Q3	1,867,368	-2.4	2,073,389	11.0	2,127,157	2.6	1,904,052	-10.5	1,625,527	-14.6
Q4	2,021,530	-0.7	2,109,882	4.4	2,199,419	4.2	1,812,914	-17.6	1,673,315	-7.7
年合計	7,650,506	-3.1	8,173,171	6.8	8,209,681	0.4	7,750,954	-5.6	6,710,500	-13.4