

2024



Public Interest Incorporated Foundation
Japan Maritime Center

Introduction

The Japan Maritime Center (JMC) was established in April 2007 through the merger of the Nippon Kaiji Foundation and the Nippon Kaiun Shinkokai, both of which were established in 1964. In April 2011, we transitioned from a civil law foundation to a public interest incorporated foundation based on the “Act on Authorization of Public Interest Incorporated Association and Public Interest Incorporated Foundation.”

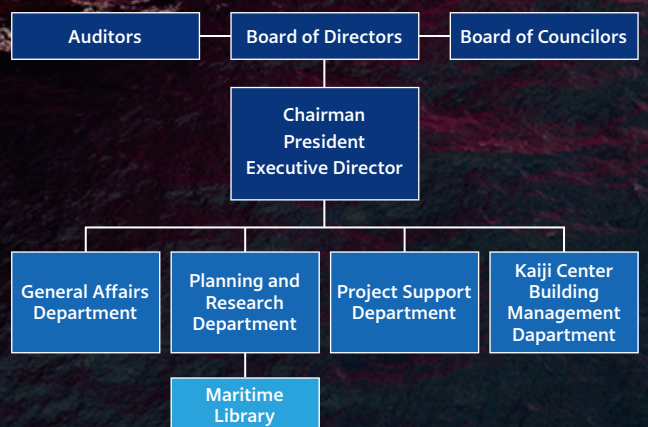
In order to accurately respond to the rapid changes in the global economy and the increasingly complex issues related to maritime affairs, the Center conducts activities based on three pillars: various maritime related research and policy proposals, operation of a maritime library, and support for maritime related public interest activities.

Basic Philosophy

- ⊗ As a central think tank for the maritime community, we will contribute to cooperation and collaboration among the maritime industry, government agencies, and research institutions.
- ⊗ To contribute to the development of the maritime industry, which is indispensable to Japan’s economy and society.
- ⊗ To contribute to the promotion of public interest projects as a central institution in the maritime field
- ⊗ Contribute to the realization of a safe and secure maritime society
- ⊗ Contributing to the realization of a maritime society in harmony with the environment
- ⊗ Contributing to the international activities of the maritime community



Organization



The activities of the Center are supported by the Japan Shipowners’ Association and the Japan Federation of Pilots’ Associations.



Message from the Chairman

Japan, as an island country surrounded by sea, relies more than 99% of its imports and exports by volume on maritime transport. The maritime industry, which is essential for seaborne trade, therefore plays a key role to sustain our economic activities and livelihood.

On the other hand, a number of complex challenges have emerged in recent years that require transformative change, and Japan's maritime industry is facing unprecedented pressure to swiftly respond to these challenges by adapting itself to the rapidly changing environment.

The first challenge is the disruption of global supply chain which is linked to the international maritime transport activities. Although the disruption caused by the COVID-19 has largely subsided, Russia's war of aggression against Ukraine since February 2022 is still ongoing, and an armed conflict has also erupted between Israel and Hamas since October 2023. In connection with this, there have been a series of attacks on merchant ships in the Red Sea by the Houthi rebel group in Yemen, forcing many ships to change their routes to the Cape of Good Hope instead of navigating through the Red Sea and Gulf of Aden. As a result, the global supply chain is being seriously affected by delays in transportation and rising costs.

The second challenge is the climate change, which has become a global issue that requires urgent actions. To achieve the goal of decarbonizing international shipping, discussions are underway at the International Maritime Organization (IMO) to develop mid-term greenhouse gas (GHG) reduction measure. The European Union (EU), on the other hand, has preemptively applied the EU Emissions Trading Scheme (EU ETS) to ships calling at EU ports in 2024. The shipbuilding industry is accelerating its efforts to develop innovative technologies applicable to ships to achieve net-zero GHG emissions.

The third challenge is to guide innovations such as digital transformation (DX) and green transformation (GX). Efforts to apply innovative technologies is accelerating, including efforts to commercialize Maritime Autonomous Surface Ships (MASS), and development of new business fields, such as offshore wind power generation, is also progressing. The recruitment and training of maritime personnel in a systematic manner to apply these technologies onboard ships have become an increasingly important issue.

While efforts to tackle these domestic and international issues represent a great "challenge" for the Japanese maritime industry, they also provide a great "opportunity" for the industry, which plays a key role in Japan's economic security, to enhance its international competitiveness and transform itself into a truly sustainable industry.

As a central public interest incorporated foundation for the promotion of the maritime field in Japan, the Japan Maritime Center (JMC) actively responds to these changing domestic and international trends, conducts surveys and research using its expertise, serves as a platform to enable collaboration among stakeholders from the maritime industry, government agencies, and research institutions, provides support for maritime related public interest activities, and operates a maritime library.

While the global political and economic situation is becoming increasingly fluid and uncertain, we will strive to enhance our international activities and strengthen cooperation and collaboration with stakeholders in the maritime industry, government agencies, and research institutions, in order to strengthen the international competitiveness of Japan's maritime industry, and to further promote public interest activities, increase public awareness and gain public understanding on the importance of the maritime community.

We look forward to your understanding and cooperation in our efforts and activities.

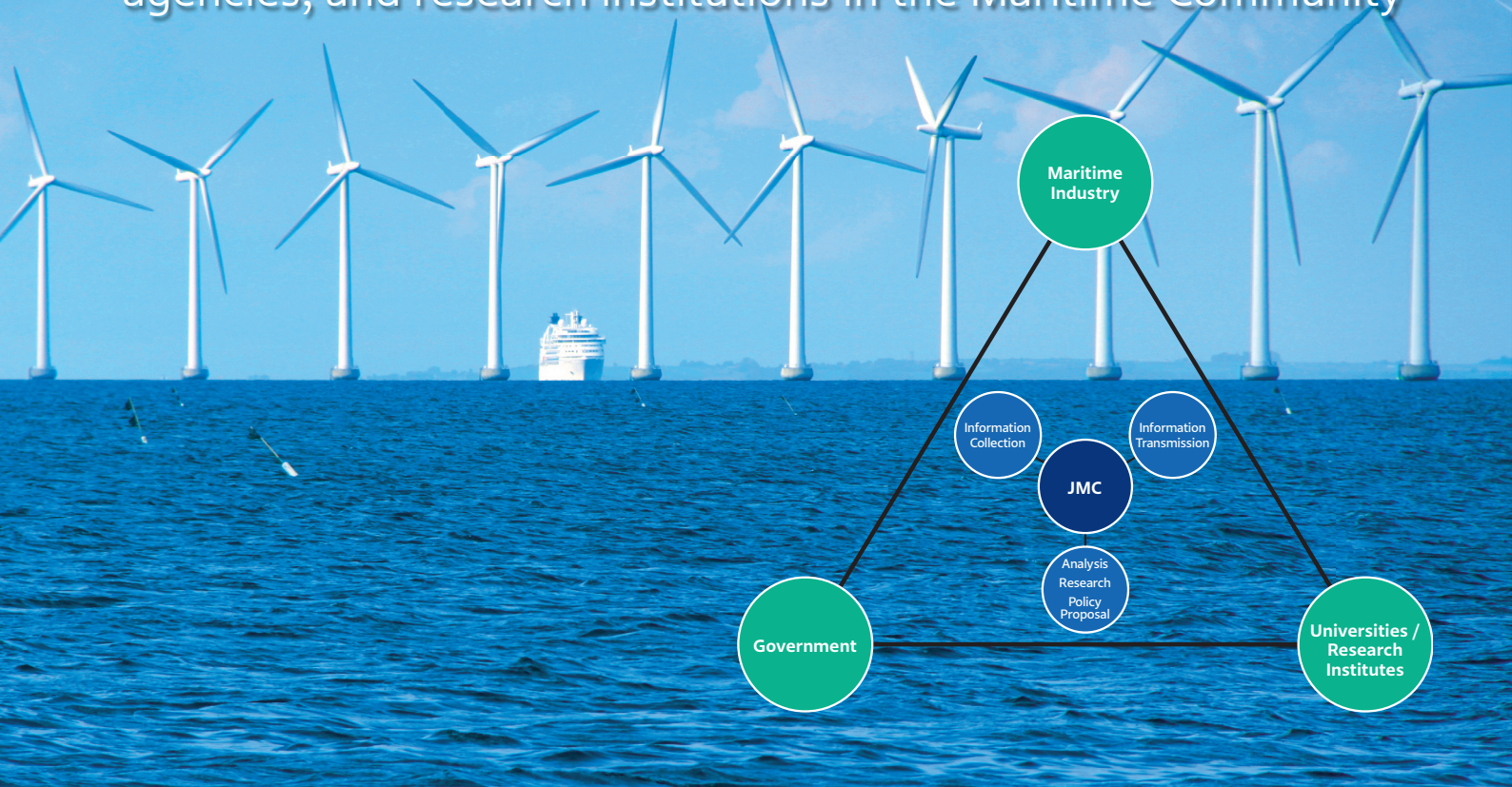


April 2024



Masafumi Shukuri
Chairman, Japan Maritime Center

Platform for collaboration among the industry, government agencies, and research institutions in the Maritime Community



Research Activities through Research Committees

JMC conducts research and study, and makes policy proposals, organizing “Research Group on Shipping Issues,” with the participation of industry, governmental bodies, and academia.

“Research Group on Shipping Issues” has “Board of Research Committees,” which is forum for discussing a basic policy and comprehensive strategy of research and study projects or policy proposals. “Research Group on Shipping Issues” has 5 Standing Committees, in which individual issues are studied and discussed in line with the policy and strategy adopted by the “Board of Research Committees.”

Research Group on Shipping Issues

Board of Research Committees

(Chairperson: Keiji Habara, Professor Emeritus, The Kobe University)



Research Committees on

- IMO Legal Committee
- International Oil Pollution Compensation Funds
- Issues on Maritime Economy
- Issues on Seafarers
- Issues on Marine Environment

JMC will analyze recent trends in international situation and grasp the needs of the maritime community. JMC is engaged in the following activities in cooperation and collaboration with industry, governmental bodies, and academia, so that Japan may chart a right course and continue to thrive as a maritime country and a marine nation.

- Contribute to the sustainable development of the maritime industry centered around the ocean shipping industry, addressing following issues.
 - Decarbonization of international shipping as a countermeasure against climate change
 - Securing and developing maritime human resources
 - Strengthening the international competitiveness of ocean-going shipping
 - Promotion of maritime innovation
 - Development of new markets
 - Growth of maritime clusters
 - Development of global supply chains centered on East Asia and ASEAN countries
 - Japan’s engagement in the formulation of international rules and regulations at the International Maritime Organization (IMO) and other organizations
- Contribution to stable international maritime transport and Japan’s economic security
- Grasping and analyzing trends of domestic and international maritime transport
- Contribution to securing fairness and equitableness of international compensation scheme for damages caused by maritime accidents



Board of Research Committees (February 2024)

Attending International Meetings

Cooperation with international organizations and participation in international conferences

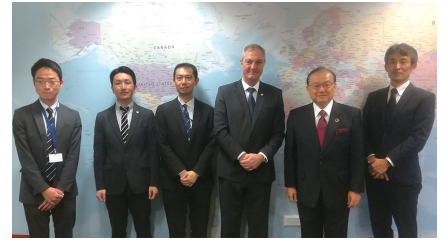
We have held high-level cooperation with the International Maritime Organization (IMO), the International Oil Pollution Compensation Fund (IOPCF), the International Labor Organization (ILO), etc., and participated in meetings of these organizations as members of the Japanese delegation.



Attending MEPC 80
(July 2023, IMO headquarters plenary room)



Visiting IMO Secretary-General Kitack Lim
(November 2023, IMO headquarters)



Visiting IOPCF Funds Director Gaute Sivertsen
(November 2023, IOPCF Funds office)

Collaboration with the World Maritime University and the IOPCF Funds

JMC has concluded an agreement with the World Maritime University (WMU) in Malmö, Sweden, to conduct joint research and academic exchange to keep ourselves updated with the latest agenda and methodologies as well as to improve our research activities. In 2023, we held collaborative projects with the WMU and the International Oil Pollution Compensation Fund (IOPCF) to jointly present our activities and the development on relevant agenda. In fiscal year 2024, we are planning to carry out full-scale joint activities with JTTRI, KMI, and KUMLU.



JMC & IOPCF Funds Joint Seminar
(October 2023, Tokyo)



JMC & WMU Joint Symposium
(November 2023, Malmö)

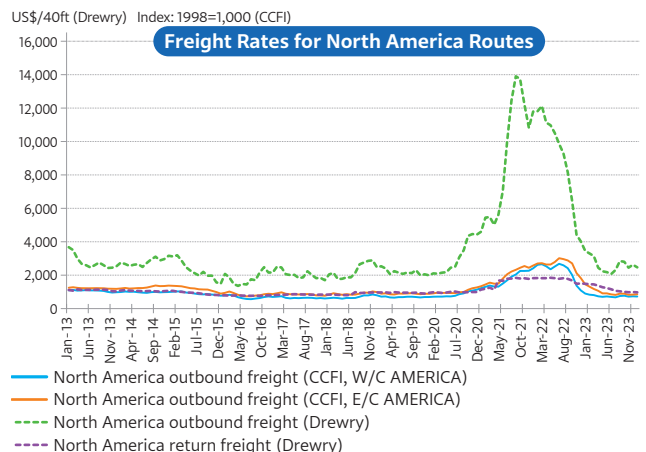
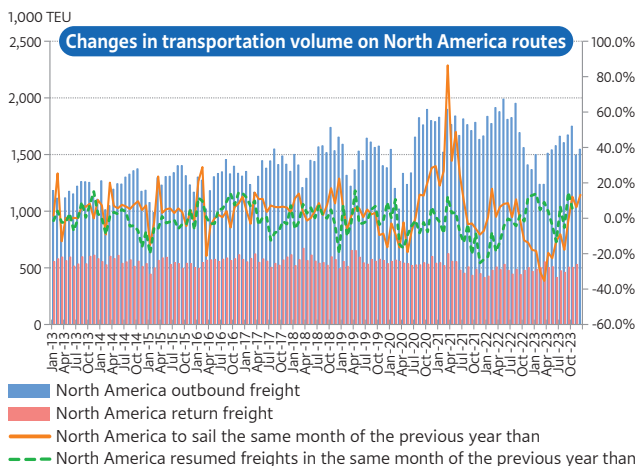
- JMC makes research about maritime transport and logistics abroad and exchange of information and views about them, actively collaborating with universities, think tanks, and research institutes etc. in Japan.
- JMC promotes understanding of younger generation, forging future of Japan, about maritime and shipping policies.

Publication of the import and export statistics

Container import and export statistics released

Publication of monthly report on container trade statistics
We collect data and information related to international maritime container trade in major trading routes, including Asia to North America and Asia to Europe routes, and publish monthly reports on key statistics.

- Trends in Containerized Cargo Movement between Japan, Asia and the U.S.
- Trends in Containerized Cargo Movement between Japan, Asia and Europe
- Trends in Japan-China Container Routes and Intra-Asia Container Routes



Information Transmission

Maritime Nation Forum

The Maritime Forum is held once or twice a year to attract public interest and gain wider understanding on the activities of the maritime community by inviting speakers and panelists to discuss outstanding issues.

The 32nd National Maritime & Tourism Forum in Mie Prefecture 2023

-Promoting maritime and tourism industries and securing maritime safety-
(October 2023, venue in Mie Prefecture with online streaming)



The 33rd National Maritime Forum in Tokyo 2024

“Prospects for resilient maritime industry”

(February 2024, venue in Tokyo with online streaming)



JMC Maritime Seminar

In March 2022, the JMC started to hold a series of JMC Maritime Promotion Seminars on various issues, including research topics covered by the JMC, to share the status quo and explore ideas to address challenges faced by the maritime community.

Part 6. Challenges and prospects of international shipping & logistics towards resilient global supply chains (May 2023)



Part 7. Trends and prospects of container shipping industry (July 2023)



Part 8. Deepening cooperation between shippers and shipping companies to optimize supply chains (December 2023)



About the Logo

As a core think tank in the maritime community, the Japan Maritime Center is constantly reviewing to improve its activities to contribute to the development of the maritime industry, which is indispensable to Japan's economy and society. Based on this idea, we asked an artist, Ms. Aki Fueda, to visualize our ideas and hopes into a logo. Ms. Fueda explains that “image of waves and sky is expressed in the letters M and C, which comes after the first letter J. The upward slope imprinted in the letter C represents our hope that good fortune will prevail for the betterment of the industry.”



Home page <https://www.jpmac.or.jp>

The website provides a variety of maritime-related information in a timely manner. JMC also operates a portal site for maritime human resource development and maritime education.



E-mail Magazine

This monthly newsletter provides information on the research and study activities of the Japan Maritime Center, announcements from the Maritime Library, recommended new books, and lectures on how to look up maritime materials.



✉ Sign up for our e-mail magazine
<http://www.jpmac.or.jp/etc/mail-magazine.html>



JMC supports maritime-related public interest activities that promote cooperation with related organizations based on the needs of society, such as SDGs, global environment, and work style reform.

Subsidized organizations in FY2024

Maritime Law

Japanese Maritime Law Association

Seafarers

Seamen’s Employment Center of Japan
 Maritime Academy Foundation
 The Maritime Human Resource Institute, Japan
 The Association for promoting safety and sanitation for Seafarers
 Alberi del Cacao

Maritime Safety

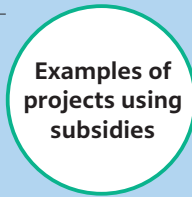
The Japan Association of Marine Safety
 Tokyo wan Association for Marine Safety
 The Kobe Marine Casualty Prevention Institute
 The Seibu Association for Preventing Marine Casualty
 The Isewan Marine Safety Association
 The Japan Sea Marine Accidents Prevention Association
 Setonaikai Maritime Safety Association
 Japan Marine Rescue Association
 Marine Accident Inquiry and Safety Investigation Association
 Japan Coast Guard Association

Maritime Public Relation

Japan Maritime Public Relation Center
 Japan Sea Cadet Federation

Pilot

The Maritime Human Resource Institute, Japan



Seafarers’ Accident Prevention Project and Survival Training



Sailboat workshop



Sea cadets



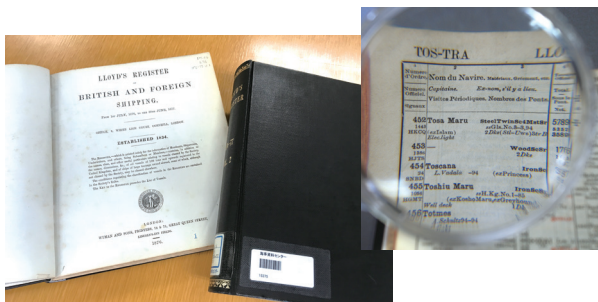
Maritime Library

Maritime Library, established in June 1974, is one of the major maritime libraries in Asia open to the public. JMC administrates the library, upgrading its functions, and enhancing user’s convenience.

Main Items in the Collection

JMC collects reference books and key publications on maritime affairs ranging from the mid-19th century to the present.

- Containerisation International (1977-)
- Containerisation International Yearbook (1972-2012)
- Fairplay (1984-2018)
- Lloyd’s List (1961-)
- Lloyd’s Register of Shipping, Register of Ships (1876-)
- Shipping Statistics Yearbook (Bremen 1966-)
- Nihon Senmeiroku (Japan Register of Ships) (1890-1998)



Lloyd’s Register

We also send out messages via X (Twitter).



@kajitoshokan



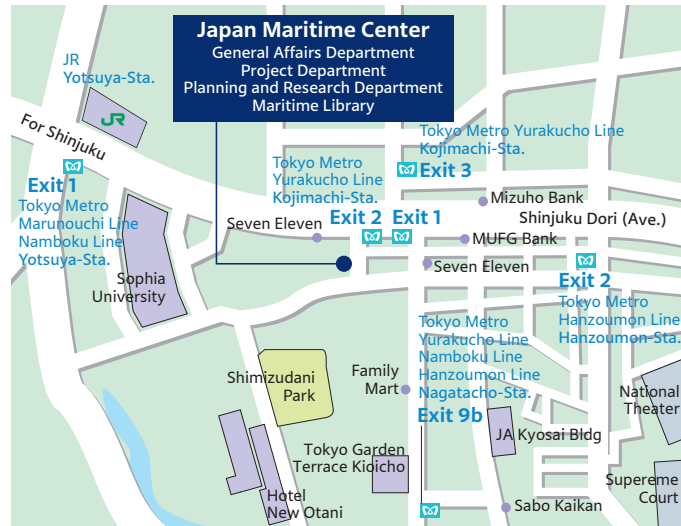
Our library holds themed exhibitions of its collection. (The exhibitions are changed three or four times a year.)



The Library provides an enquiry service by e-mail in English. Online Public Access Catalog (OPAC) is also available via JMC’s Website.

<https://www.jpmac.or.jp/library/>





Public Interest Incorporated Foundation
Japan Maritime Center

Kaiji Center Bldg. 8F, 4-5 Koji-machi, Chiyoda-ku, Tokyo,
102-0083, Japan

**General Affairs Department/
Project Support Department**

TEL. +81-3(3265)5481 FAX. +81-3(3222)6840
E-mail: jpmac-head@jpmac.or.jp

Planning and Research Department

TEL. +81-3(3263)9421 FAX. +81-3(3264)5565
E-mail: planning-research@jpmac.or.jp

Maritime Library

TEL. +81-3(3263)9422 FAX. +81-3(3265)5035
E-mail: library@jpmac.or.jp

Kaiji Center Building Management Department

TEL. +81-3(3265)2961 FAX. +81-3(3265)2962
E-mail: contact@macbld.co.jp

URL <https://www.jpmac.or.jp>